



TRANSPORTATION CABINET

Frankfort, Kentucky 40622
www.transportation.ky.gov/

Steven L. Beshear
Governor

Michael W. Hancock, P.E.
Secretary

November 18, 2015

CALL NO. 106
CONTRACT ID NO. 151279
ADDENDUM # 2

Subject: Lawrence County, STP 5255 (023)
Letting November 20, 2015

- (1) Revised - Plan Sheet - U2
- (2) Revised - Bid Items - Pages 405-409(a) of 409

Proposal revisions are available at <http://transportation.ky.gov/Construction-Procurement/>.

Plan revisions are available at <http://www.lynnimaging.com/kytransportation/>.

If you have any questions, please contact us at 502-564-3500.

Sincerely,

A handwritten signature in cursive script that reads "Rachel Mills".

Rachel Mills, P.E.
Director
Division of Construction Procurement

RM:ks
Enclosures



An Equal Opportunity Employer M/F/D

SUMMARY OF WORK

CONTRACT 502-13-01 SANITARY SEWER UTILITY RELOCATION
 Revised June 2, 2015 LAWRENCE COUNTY FISCAL COURT
 BLAINE-LOUISA ROAD/KY 32
 LAWRENCE COUNTY, KENTUCKY
 COMMONWEALTH OF KENTUCKY
 DEPARTMENT OF HIGHWAYS
 ITEM NO. 12.8405.00
 PROJECT NUMBER FD52 064 84775 01D

BID CODE	ITEM NO.	ITEM	QUANTITY	UNIT	UNIT PRICE	TOTAL
LINE "A"						
15113	1.	10-Inch Class SDR 35 PVC Pipe, Furnishing, Laying and Backfilling, Detectable Tape, Unclassified Excavation, All Depths, Complete	905	L.F.	\$ _____	\$ _____
15112	2.	8-Inch Class SDR 35 PVC Pipe, Furnishing, Laying and Backfilling, Detectable Tape, Unclassified Excavation, All Depths, Complete	20	L.F.	\$ _____	\$ _____
Incidental	3.	10-inch by 6-inch PVC Wye/TEE, with 18 L.F. of 6-inch Lateral PVC Pipe and Cap, Furnish and Install, Complete	2	Each	\$ _____	\$ _____
15096	4.	Furnish and Install Standard 4-Foot Diameter Manhole, 0.01'-6.01' and Accessories, Watertight Traffic Weight Frame, Lid, Furnish and Install, Complete	2	Each	\$ _____	\$ _____
15096	5.	Furnish and Install Standard 4-Foot Diameter Manhole Over Existing 8-inch or 10-inch Line, 1.00'-6.00' Depth, Including Traffic Weight Frame and Lid, Complete	4	Each	\$ _____	\$ _____
Incidental	6.	Extra Depth Manhole, 4-Foot Diameter Range, 6.01' to 15.00', Complete	30	V.F.	\$ _____	\$ _____
Incidental	7.	Cut, Cap, and Block All Sizes of Existing Gravity Lines, Complete	5	Each	\$ _____	\$ _____
15099	8.	Core or Cut into Existing Manhole, Sta. 0+00, Complete	1	Each	\$ _____	\$ _____
15094	9.	Adjust Height of Existing Manhole, Complete	1.0	V.F.	\$ _____	\$ _____
15093	10.	Remove Abandoned Existing Manhole, Frame, and Lid, and Fill-In Manhole, Complete	3	Each	\$ _____	\$ _____
15100	11.	Extra for Outside Drop-in to Manhole, All Depths, Complete	1	Each	\$ _____	\$ _____
Incidental	12.	Crushed Rock on Trench Surface, In Place, Complete (_____ L.F. x 255 Lbs/2000 = _____ Tons)	20	Ton	\$ _____	\$ _____
Incidental	13.	Extra for Crushed Rock for Trench Stabilization, Only On Order of the Engineer	20	Ton	\$ _____	\$ _____
LINE "A"						\$ _____

SUMMARY OF WORK

CONTRACT 502-13-01 SANITARY SEWER UTILITY RELOCATION
 Revised June 2, 2015 LAWRENCE COUNTY FISCAL COURT
 BLAINE-LOUISA ROAD/KY 32
 LAWRENCE COUNTY, KENTUCKY
 COMMONWEALTH OF KENTUCKY
 DEPARTMENT OF HIGHWAYS
 ITEM NO. 12.8405.00
 PROJECT NUMBER FD52 064 84775 01D

BID CODE	ITEM NO.	ITEM	QUANTITY	UNIT	UNIT PRICE	TOTAL
LINE "B"						
15113	1.	10-Inch Class SDR 35 PVC Pipe, Furnishing, Laying and Backfilling, Detectable Tape, Unclassified Excavation, All Depths, Complete	1,045	L.F.	\$ _____	\$ _____
15090	2.	6-Inch SDR-35 PVC Lateral Pipe, Furnishing, Laying and Backfilling, Detectable Tape, Unclassified Excavation, All Depths, Complete (230 TOTAL LF)	1	Each	\$ _____	\$ _____
15092	3.	Furnish and Install Standard 4-Foot Diameter Manhole, 0.01' to 6.01' Depth, Including Traffic Weight Frame and Lid, Complete	6	Each	\$ _____	\$ _____
15576	4.	Extra for Outside Drop into Manhole, All Depths, Furnish and Install, Complete	1	Each	\$ _____	\$ _____
15023	5.	16-inch x 0.281-inch Cover Pipe, Including Spacers, End Seals, Furnishing and Installing, Complete (Open Cut or Bore Methods), Note: 100 L.F. Open Cut from Existing Manhole to Manhole B-1	225	L.F.	\$ _____	\$ _____
15017	6.	Boring or Jacking for 16-Inch Steel Cover Pipe, Unclassified Excavation, Complete	125	L.F.	\$ _____	\$ _____
	7.	Locate, Cut, and Tie-in to Existing Sewer Cleanout, Complete with Fittings as Needed	2	Each	\$ _____	\$ _____
Incidental	8.	Extra Depth Manhole, 4-Foot Diameter Range, 6.0' to 15.00', Complete	18	V.F.	\$ _____	\$ _____
	9.	Cut, Cap, and Block All Sizes of Existing Gravity or Service Lines, Complete	4	Each	\$ _____	\$ _____
15099	10.	Core or Cut into Existing Manhole, Complete	2	Each	\$ _____	\$ _____
15093	11.	Remove Abandoned Existing Manhole, Frame, and Lid, and Fill-In Manhole, Complete	4	Each	\$ _____	\$ _____
Incidental	12.	Crushed Rock on Trench Surface, In Place, Complete (_____ L.F. x 255 Lbs/2000 = _____ Tons)	35	Ton	\$ _____	\$ _____
Incidental	13.	Extra for Crushed Rock for Trench Stabilization, Only on Order of the Engineer	20	Ton	\$ _____	\$ _____
LINE "B"						\$ _____

SUMMARY OF WORK

CONTRACT 502-13-01 SANITARY SEWER UTILITY RELOCATION
 Revised June 2, 2015 LAWRENCE COUNTY FISCAL COURT
 BLAINE-LOUISA ROAD/KY 32
 LAWRENCE COUNTY, KENTUCKY
 COMMONWEALTH OF KENTUCKY
 DEPARTMENT OF HIGHWAYS
 ITEM NO. 12.8405.00
 PROJECT NUMBER FD52 064 84775 01D

BID CODE	ITEM NO.	ITEM	QUANTITY	UNIT	UNIT PRICE	TOTAL
LINE "C"						
15112	1.	8-Inch Class SDR 35 PVC Pipe, Furnishing, Laying and Backfilling, Detectable Tape, Unclassified Excavation, All Depths, Complete	365	L.F.	\$ _____	\$ _____
15096	2.	Furnish and Install Standard 4-Foot Diameter Manhole, 0.01'-6.01' and Accessories, Watertight Traffic Weight Frame, Lid, Furnish and Install, Complete	1	Each	\$ _____	\$ _____
15101	3.	Extra for Outside Drop-in to Manhole, All Depths, Furnish and Install, Complete	1	Each	\$ _____	\$ _____
15022	4.	12-Inch x 0.218-Inch Cover Pipe, Including Spacers, End Seals, Furnishing and Installing, Complete (Open Cut or Bore Methods)	140	L.F.	\$ _____	\$ _____
15016	5.	Boring or Jacking for 12-Inch Steel Cover Pipe, Unclassified Excavation, Complete	140	L.F.	\$ _____	\$ _____
Incidental	6.	Extra Depth Manhole, 4-Foot Diameter Range, 6.01' to 15.00', Complete	10	V.F.	\$ _____	\$ _____
Incidental	7.	Cut, Cap, and Block All Sizes of Existing Gravity Lines, Complete	1	Each	\$ _____	\$ _____
15099	8.	Core or Cut into Existing Manhole, Complete	2	Each	\$ _____	\$ _____
Incidental	9.	Crushed Rock on Trench Surface, In Place, Complete (_____ L.F. x 255 Lbs/2000 = _____ Tons)	20	Ton	\$ _____	\$ _____
Incidental	10.	Extra for Crushed Rock for Trench Stabilization, Only On Order of the Engineer	10	Ton	\$ _____	\$ _____
LINE "C"						\$ _____

SUMMARY OF WORK

CONTRACT 502-13-01 SANITARY SEWER UTILITY RELOCATION
 Revised June 2, 2015 LAWRENCE COUNTY FISCAL COURT
 BLAINE-LOUISA ROAD/KY 32
 LAWRENCE COUNTY, KENTUCKY
 COMMONWEALTH OF KENTUCKY
 DEPARTMENT OF HIGHWAYS
 ITEM NO. 12.8405.00
 PROJECT NUMBER FD52 064 84775 01D

BID CODE	ITEM NO.	ITEM	QUANTITY	UNIT	UNIT PRICE	TOTAL
LINE "D"-REVISED JUNE 2, 2015						
15122	1.	8-Inch Class SDR 35 PVC Pipe, Furnishing, Laying and Backfilling, Detectable Tape, Unclassified Excavation, All Depths, Complete	50	L.F.	\$ _____	\$ _____
15096	2.	Furnish and Install Standard 4-Foot Diameter Manhole, 0.01'-6.01' and Accessories, Watertight Traffic Weight Frame, Lid, Furnish and Install, Complete	1	Each	\$ _____	\$ _____
15096	3.	Furnish and Install Standard 4-Foot Diameter Manhole Over Existing 8-inch or 10-inch Line, 1.00'-6.00' Depth, Including Traffic Weight Frame and Lid, Complete	1	Each	\$ _____	\$ _____
Incidental	4.	Crushed Rock on Trench Surface, In Place, Complete (_____ L.F. x 255 Lbs/2000 = _____ Tons)	5	Ton	\$ _____	\$ _____
LINE "D"						\$ _____
LINE "E"						
15588	1.	10-Inch Class SDR 35 PVC Pipe, Furnishing, Laying and Backfilling, Detectable Tape, Unclassified Excavation, All Depths, Complete	450	L.F.	\$ _____	\$ _____
15572	2.	Furnish and Install Standard 4-Foot Diameter Manhole, 0.01'-6.01' and Accessories, Watertight Traffic Weight Frame, Lid, Furnish and Install, Complete	3	Each	\$ _____	\$ _____
Incidental	3.	Extra Depth Manhole, 4-Foot Diameter, 6.00' to 20.00' Depth, Complete	13	V.F.	\$ _____	\$ _____
15097	4.	Core into Existing Manhole and Rebuild Invert, Complete	1	Each	\$ _____	\$ _____
15023	5.	18-Inch x 0.312-Inch Cover Pipe, Open Cut, with Spacers, End Seals, Unclassified Excavation, Complete	260	L.F.	\$ _____	\$ _____
15101	6.	Extra for Outside Drop into Manhole, All Depths, Complete	1	Each	\$ _____	\$ _____
LINE "E"						\$ _____

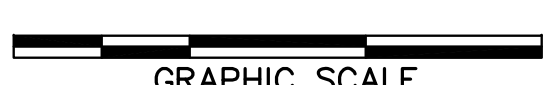
TOTAL SUMMARY OF WORK

CONTRACT 502-13-01 SANITARY SEWER UTILITY RELOCATION
 Revised June 2, 2015 LAWRENCE COUNTY FISCAL COURT
 BLAINE-LOUISA ROAD/KY 32
 LAWRENCE COUNTY, KENTUCKY
 COMMONWEALTH OF KENTUCKY
 DEPARTMENT OF HIGHWAYS
 ITEM NO. 12.8405.00
 PROJECT NUMBER FD52 064 84775 01D

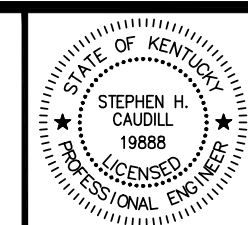
BID CODE	ITEM NO.	ITEM	QUANTITY	UNIT	UNIT PRICE	TOTAL
15113	1.	10-Inch Class SDR 35 PVC Pipe, Furnishing, Laying and Backfilling, Detectable Tape, Unclassified Excavation, All Depths, Complete	2,400	L.F.	\$ _____	\$ _____
15112	2.	8-Inch Class SDR 35 PVC Pipe, Furnishing, Laying and Backfilling, Detectable Tape, Unclassified Excavation, All Depths, Complete	435	L.F.	\$ _____	\$ _____
15096	3.	Furnish and Install Standard 4-Foot Diameter Manhole, 0.01'-6.01' and Accessories, Watertight Traffic Weight Frame, Lid, Furnish and Install, Complete	7	Each	\$ _____	\$ _____
15096	4.	Furnish and Install Standard 4-Foot Diameter Manhole Over Existing 8-inch or 10-inch Line, 1.00'-6.00' Depth, Including Traffic Weight Frame and Lid, Complete	5	Each	\$ _____	\$ _____
15099	5.	Core or Cut into Existing Manhole, Sta. 0+00, Complete	5	Each	\$ _____	\$ _____
15094	8.	Adjust Height of Existing Manhole, Complete	1.0	V.F.	\$ _____	\$ _____
15093	9.	Remove Abandoned Existing Manhole, Frame, and Lid, and Fill-In Manhole, Complete	7	Each	\$ _____	\$ _____
15100	10.	Extra for Outside Drop-in to Manhole, All Depths, Complete	1	Each	\$ _____	\$ _____
15090	11.	6-Inch SDR-35 PVC Lateral Pipe, Furnishing, Laying and Backfilling, Detectable Tape, Unclassified Excavation, All Depths, Complete (230 TOTAL LF)	1	Each	\$ _____	\$ _____
15092	12.	Furnish and Install Standard 4-Foot Diameter Manhole, 0.01' to 6.01' Depth, Including Traffic Weight Frame and Lid, Complete	6	Each	\$ _____	\$ _____
15101	13.	Extra for Outside Drop into Manhole, All Depths, Furnish and Install, Complete	2	Each	\$ _____	\$ _____
15023	14.	16-Inch x 0.281-inch Cover Pipe, Including Spacers, End Seals, Furnishing and Installing, Complete (Open Cut or Bore Methods), Note: 100 L.F. Open Cut from Existing Manhole to Manhole B-1	485	L.F.	\$ _____	\$ _____
15017	15.	Boring or Jacking for 16-Inch Steel Cover Pipe, Unclassified Excavation, Complete	125	L.F.	\$ _____	\$ _____
15022	16.	12-Inch x 0.218-Inch Cover Pipe, Including Spacers, End Seals, Furnishing and Installing, Complete (Open Cut or Bore Methods)	140	L.F.	\$ _____	\$ _____
15016	17.	Boring or Jacking for 12-Inch Steel Cover Pipe, Unclassified Excavation, Complete	140	L.F.	\$ _____	\$ _____
15097	18.	Core into Existing Manhole and Rebuild Invert, Complete	1	Each	\$ _____	\$ _____
15100	19.	Extra for Outside Drop into Manhole, All Depths, Complete	1	Each	\$ _____	\$ _____
Incidental	20.	10-inch by 6-inch PVC Wye/TEE, with 18 L.F. of 6-inch Lateral PVC Pipe and Cap, Furnish and Install, Complete	2	Each	\$ _____	\$ _____
Incidental	21.	Extra Depth Manhole, 4-Foot Diameter Range, 6.01' to 15.00', Complete	58	V.F.	\$ _____	\$ _____
Incidental	22.	Cut, Cap, and Block All Sizes of Existing Gravity Lines, Complete	6	Each	\$ _____	\$ _____
Incidental	23.	Crushed Rock on Trench Surface, In Place, Complete (_____ L.F. x 255 Lbs/2000 = _____ Tons)	80	Ton	\$ _____	\$ _____
Incidental	24.	Extra for Crushed Rock for Trench Stabilization, Only On Order of the Engineer	50	Ton	\$ _____	\$ _____
Incidental	25.	Locate, Cut, and Tie-in to Existing Sewer Cleanout, Complete with Fittings as Needed	2	Each	\$ _____	\$ _____
Incidental	26.	Cut, Cap, and Block All Sizes of Existing Gravity or Service Lines, Complete	4	Each	\$ _____	\$ _____
Incidental	27.	Extra Depth Manhole, 4-Foot Diameter, 6.00' to 20.00' Depth, Complete	13	V.F.	\$ _____	\$ _____
TOTAL CONTRACT 502-13-01						\$ _____

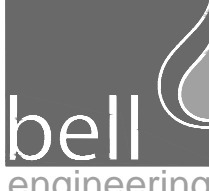
J:\LAWRENCE\502-13-01 KY 32 RELOCATION\SUBMITTALS\DWG\10/22/2015 10:15:39 AM.dwg

DESIGNER	SRD	DATE	BY	REVISION
DRAWN	DRH	10/13	KGG	REVISION PER KTC COMMENTS
CHECKED	KGG	10/23	SRD	REVISION PER KTC COMMENTS BID CODES
APPROVED	RER			

 GRAPHIC SCALE
SCALE: AS NOTED

ALL RIGHTS RESERVED
 THIS DOCUMENT IS THE PROPERTY OF BELL ENGINEERING AND SHALL NOT BE REPRODUCED IN WHOLE OR IN PART OR USED FOR CONSTRUCTION OF OTHER THAN THIS SPECIFIC PROJECT WITHOUT THE WRITTEN PERMISSION OF BELL ENGINEERING.
 FACSIMILES OF LICENSED PROFESSIONAL ENGINEER AND/OR LAND SURVEYOR SEALS, IF AFFIXED TO THIS DOCUMENT SHALL BE CONSIDERED LEGITIMATE ONLY IF SIGNED AND DATED BY THE REGISTRANT.





Lexington, KY (859) 278-5412
 Hopkinsville, KY (270) 886-5466

SEWER LINE UTILITY RELOCATION
 BLAINE-LOUISA (KY 32)
 LAWRENCE COUNTY FISCAL COURT
 LOUISA, KENTUCKY

SEWER
 SUMMARY OF WORK

DIVISION	ALL
CONTRACT NO.	502-13-01
DATE	APRIL 2013
SHEET NO.	U2 OF U12

SUMMARY OF WORK

CONTRACT 502-13-01 SANITARY SEWER UTILITY RELOCATION
 Revised June 2, 2015 LAWRENCE COUNTY FISCAL COURT
 BLAINE-LOUISA ROAD/KY 32
 LAWRENCE COUNTY, KENTUCKY
 COMMONWEALTH OF KENTUCKY
 DEPARTMENT OF HIGHWAYS
 ITEM NO. 12.8405.00
 PROJECT NUMBER FD52 064 84775 01D

BID CODE	ITEM NO.	ITEM	QUANTITY	UNIT	UNIT PRICE	TOTAL
LINE "A"						
15113	1.	10-Inch Class SDR 35 PVC Pipe, Furnishing, Laying and Backfilling, Detectable Tape, Unclassified Excavation, All Depths, Complete	905	L.F.	\$ _____	\$ _____
15112	2.	8-Inch Class SDR 35 PVC Pipe, Furnishing, Laying and Backfilling, Detectable Tape, Unclassified Excavation, All Depths, Complete	20	L.F.	\$ _____	\$ _____
Incidental	3.	10-inch by 6-inch PVC Wye/Tee, with 18 L.F. of 6-inch Lateral PVC Pipe and Cap, Furnish and Install, Complete	2	Each	\$ _____	\$ _____
15096	4.	Furnish and Install Standard 4-Foot Diameter Manhole, 0.01'-6.01' and Accessories, Watertight Traffic Weight Frame, Lid, Furnish and Install, Complete	2	Each	\$ _____	\$ _____
15096	5.	Furnish and Install Standard 4-Foot Diameter Manhole Over Existing 8-inch or 10-inch Line, 1.00'-6.00' Depth, Including Traffic Weight Frame and Lid, Complete	4	Each	\$ _____	\$ _____
Incidental	6.	Extra Depth Manhole, 4-Foot Diameter Range, 6.01' to 15.00', Complete	30	V.F.	\$ _____	\$ _____
Incidental	7.	Cut, Cap, and Block All Sizes of Existing Gravity Lines, Complete	5	Each	\$ _____	\$ _____
15099	8.	Core or Cut into Existing Manhole, Sta. 0+00, Complete	1	Each	\$ _____	\$ _____
15094	9.	Adjust Height of Existing Manhole, Complete	1.0	V.F.	\$ _____	\$ _____
15093	10.	Remove Abandoned Existing Manhole, Frame, and Lid, and Fill-In Manhole, Complete	3	Each	\$ _____	\$ _____
15100	11.	Extra for Outside Drop-in to Manhole, All Depths, Complete	1	Each	\$ _____	\$ _____
Incidental	12.	Crushed Rock on Trench Surface, In Place, Complete (_____ L.F. x 255 Lbs/2000 = _____ Tons)	20	Ton	\$ _____	\$ _____
Incidental	13.	Extra for Crushed Rock for Trench Stabilization, Only On Order of the Engineer	20	Ton	\$ _____	\$ _____
LINE "A"						\$ _____

SUMMARY OF WORK

CONTRACT 502-13-01 SANITARY SEWER UTILITY RELOCATION
 Revised June 2, 2015 LAWRENCE COUNTY FISCAL COURT
 BLAINE-LOUISA ROAD/KY 32
 LAWRENCE COUNTY, KENTUCKY
 COMMONWEALTH OF KENTUCKY
 DEPARTMENT OF HIGHWAYS
 ITEM NO. 12.8405.00
 PROJECT NUMBER FD52 064 84775 01D

BID CODE	ITEM NO.	ITEM	QUANTITY	UNIT	UNIT PRICE	TOTAL
LINE "B"						
15113	1.	10-Inch Class SDR 35 PVC Pipe, Furnishing, Laying and Backfilling, Detectable Tape, Unclassified Excavation, All Depths, Complete	1,045	L.F.	\$ _____	\$ _____
15090	2.	6-Inch SDR-35 PVC Lateral Pipe, Furnishing, Laying and Backfilling, Detectable Tape, Unclassified Excavation, All Depths, Complete (230 TOTAL LF)	1	Each	\$ _____	\$ _____
15092	3.	Furnish and Install Standard 4-Foot Diameter Manhole, 0.01' to 6.01' Depth, Including Traffic Weight Frame and Lid, Complete	6	Each	\$ _____	\$ _____
15576	4.	Extra for Outside Drop into Manhole, All Depths, Furnish and Install, Complete	1	Each	\$ _____	\$ _____
15023	5.	16-inch x 0.281-inch Cover Pipe, Including Spacers, End Seals, Furnishing and Installing, Complete (Open Cut or Bore Methods), Note: 100 L.F. Open Cut from Existing Manhole to Manhole B-1	225	L.F.	\$ _____	\$ _____
15017	6.	Boring or Jacking for 16-Inch Steel Cover Pipe, Unclassified Excavation, Complete	125	L.F.	\$ _____	\$ _____
	7.	Locate, Cut, and Tie-in to Existing Sewer Cleanout, Complete with Fittings as Needed	2	Each	\$ _____	\$ _____
Incidental	8.	Extra Depth Manhole, 4-Foot Diameter Range, 6.0' to 15.00', Complete	18	V.F.	\$ _____	\$ _____
	9.	Cut, Cap, and Block All Sizes of Existing Gravity or Service Lines, Complete	4	Each	\$ _____	\$ _____
15099	10.	Core or Cut into Existing Manhole, Complete	2	Each	\$ _____	\$ _____
15093	11.	Remove Abandoned Existing Manhole, Frame, and Lid, and Fill-In Manhole, Complete	4	Each	\$ _____	\$ _____
Incidental	12.	Crushed Rock on Trench Surface, In Place, Complete (_____ L.F. x 255 Lbs/2000 = _____ Tons)	35	Ton	\$ _____	\$ _____
Incidental	13.	Extra for Crushed Rock for Trench Stabilization, Only on Order of the Engineer	20	Ton	\$ _____	\$ _____
LINE "B"						\$ _____

SUMMARY OF WORK

CONTRACT 502-13-01 SANITARY SEWER UTILITY RELOCATION
 Revised June 2, 2015 LAWRENCE COUNTY FISCAL COURT
 BLAINE-LOUISA ROAD/KY 32
 LAWRENCE COUNTY, KENTUCKY
 COMMONWEALTH OF KENTUCKY
 DEPARTMENT OF HIGHWAYS
 ITEM NO. 12.8405.00
 PROJECT NUMBER FD52 064 84775 01D

BID CODE	ITEM NO.	ITEM	QUANTITY	UNIT	UNIT PRICE	TOTAL
LINE "C"						
15112	1.	8-Inch Class SDR 35 PVC Pipe, Furnishing, Laying and Backfilling, Detectable Tape, Unclassified Excavation, All Depths, Complete	365	L.F.	\$ _____	\$ _____
15096	2.	Furnish and Install Standard 4-Foot Diameter Manhole, 0.01'-6.01' and Accessories, Watertight Traffic Weight Frame, Lid, Furnish and Install, Complete	1	Each	\$ _____	\$ _____
15101	3.	Extra for Outside Drop-in to Manhole, All Depths, Furnish and Install, Complete	1	Each	\$ _____	\$ _____
15022	4.	12-Inch x 0.218-Inch Cover Pipe, Including Spacers, End Seals, Furnishing and Installing, Complete (Open Cut or Bore Methods)	140	L.F.	\$ _____	\$ _____
15016	5.	Boring or Jacking for 12-Inch Steel Cover Pipe, Unclassified Excavation, Complete	140	L.F.	\$ _____	\$ _____
Incidental	6.	Extra Depth Manhole, 4-Foot Diameter Range, 6.01' to 15.00', Complete	10	V.F.	\$ _____	\$ _____
Incidental	7.	Cut, Cap, and Block All Sizes of Existing Gravity Lines, Complete	1	Each	\$ _____	\$ _____
15099	8.	Core or Cut into Existing Manhole, Complete	2	Each	\$ _____	\$ _____
Incidental	9.	Crushed Rock on Trench Surface, In Place, Complete (_____ L.F. x 255 Lbs/2000 = _____ Tons)	20	Ton	\$ _____	\$ _____
Incidental	10.	Extra for Crushed Rock for Trench Stabilization, Only On Order of the Engineer	10	Ton	\$ _____	\$ _____
LINE "C"						\$ _____

SUMMARY OF WORK

CONTRACT 502-13-01 SANITARY SEWER UTILITY RELOCATION
 Revised June 2, 2015 LAWRENCE COUNTY FISCAL COURT
 BLAINE-LOUISA ROAD/KY 32
 LAWRENCE COUNTY, KENTUCKY
 COMMONWEALTH OF KENTUCKY
 DEPARTMENT OF HIGHWAYS
 ITEM NO. 12.8405.00
 PROJECT NUMBER FD52 064 84775 01D

BID CODE	ITEM NO.	ITEM	QUANTITY	UNIT	UNIT PRICE	TOTAL
LINE "D"-REVISED JUNE 2, 2015						
15122	1.	8-Inch Class SDR 35 PVC Pipe, Furnishing, Laying and Backfilling, Detectable Tape, Unclassified Excavation, All Depths, Complete	50	L.F.	\$ _____	\$ _____
15096	2.	Furnish and Install Standard 4-Foot Diameter Manhole, 0.01'-6.01' and Accessories, Watertight Traffic Weight Frame, Lid, Furnish and Install, Complete	1	Each	\$ _____	\$ _____
15096	3.	Furnish and Install Standard 4-Foot Diameter Manhole Over Existing 8-inch or 10-inch Line, 1.00'-6.00' Depth, Including Traffic Weight Frame and Lid, Complete	1	Each	\$ _____	\$ _____
Incidental	4.	Crushed Rock on Trench Surface, In Place, Complete (_____ L.F. x 255 Lbs/2000 = _____ Tons)	5	Ton	\$ _____	\$ _____
LINE "D"						\$ _____
LINE "E"						
15588	1.	10-Inch Class SDR 35 PVC Pipe, Furnishing, Laying and Backfilling, Detectable Tape, Unclassified Excavation, All Depths, Complete	450	L.F.	\$ _____	\$ _____
15572	2.	Furnish and Install Standard 4-Foot Diameter Manhole, 0.01'-6.01' and Accessories, Watertight Traffic Weight Frame, Lid, Furnish and Install, Complete	3	Each	\$ _____	\$ _____
Incidental	3.	Extra Depth Manhole, 4-Foot Diameter, 6.00' to 20.00' Depth, Complete	13	V.F.	\$ _____	\$ _____
15097	4.	Core into Existing Manhole and Rebuild Invert, Complete	1	Each	\$ _____	\$ _____
15023	5.	18-Inch x 0.312-Inch Cover Pipe, Open Cut, with Spacers, End Seals, Unclassified Excavation, Complete	260	L.F.	\$ _____	\$ _____
15101	6.	Extra for Outside Drop into Manhole, All Depths, Complete	1	Each	\$ _____	\$ _____
LINE "E"						\$ _____

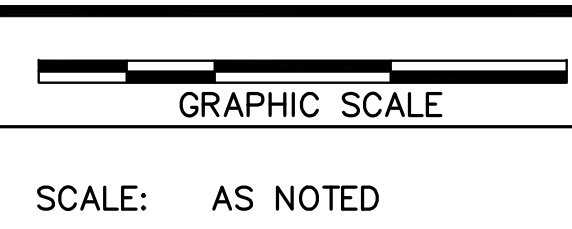
TOTAL SUMMARY OF WORK

CONTRACT 502-13-01 SANITARY SEWER UTILITY RELOCATION
 Revised June 2, 2015 LAWRENCE COUNTY FISCAL COURT
 BLAINE-LOUISA ROAD/KY 32
 LAWRENCE COUNTY, KENTUCKY
 COMMONWEALTH OF KENTUCKY
 DEPARTMENT OF HIGHWAYS
 ITEM NO. 12.8405.00
 PROJECT NUMBER FD52 064 84775 01D

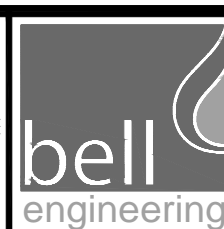
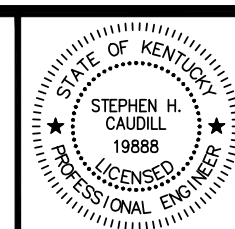
BID CODE	ITEM NO.	ITEM	QUANTITY	UNIT	UNIT PRICE	TOTAL
15113	1.	10-Inch Class SDR 35 PVC Pipe, Furnishing, Laying and Backfilling, Detectable Tape, Unclassified Excavation, All Depths, Complete	2,400	L.F.	\$ _____	\$ _____
15112	2.	8-Inch Class SDR 35 PVC Pipe, Furnishing, Laying and Backfilling, Detectable Tape, Unclassified Excavation, All Depths, Complete	435	L.F.	\$ _____	\$ _____
15096	3.	Furnish and Install Standard 4-Foot Diameter Manhole, 0.01'-6.01' and Accessories, Watertight Traffic Weight Frame, Lid, Furnish and Install, Complete	7	Each	\$ _____	\$ _____
15096	4.	Furnish and Install Standard 4-Foot Diameter Manhole Over Existing 8-inch or 10-inch Line, 1.00'-6.00' Depth, Including Traffic Weight Frame and Lid, Complete	5	Each	\$ _____	\$ _____
15099	5.	Core or Cut into Existing Manhole, Sta. 0+00, Complete	5	Each	\$ _____	\$ _____
15094	8.	Adjust Height of Existing Manhole, Complete	1.0	V.F.	\$ _____	\$ _____
15093	9.	Remove Abandoned Existing Manhole, Frame, and Lid, and Fill-In Manhole, Complete	7	Each	\$ _____	\$ _____
15100	10.	Extra for Outside Drop-in to Manhole, All Depths, Complete	1	Each	\$ _____	\$ _____
15090	11.	6-Inch SDR-35 PVC Lateral Pipe, Furnishing, Laying and Backfilling, Detectable Tape, Unclassified Excavation, All Depths, Complete (230 TOTAL LF)	1	Each	\$ _____	\$ _____
15092	12.	Furnish and Install Standard 4-Foot Diameter Manhole, 0.01' to 6.01' Depth, Including Traffic Weight Frame and Lid, Complete	6	Each	\$ _____	\$ _____
15101	13.	Extra for Outside Drop into Manhole, All Depths, Furnish and Install, Complete	2	Each	\$ _____	\$ _____
15023	14.	16-Inch x 0.281-Inch Cover Pipe, Including Spacers, End Seals, Furnishing and Installing, Complete (Open Cut or Bore Methods), Note: 100 L.F. Open Cut from Existing Manhole to Manhole B-1	485	L.F.	\$ _____	\$ _____
15017	15.	Boring or Jacking for 16-Inch Steel Cover Pipe, Unclassified Excavation, Complete	125	L.F.	\$ _____	\$ _____
15022	16.	12-Inch x 0.218-Inch Cover Pipe, Including Spacers, End Seals, Furnishing and Installing, Complete (Open Cut or Bore Methods)	140	L.F.	\$ _____	\$ _____
15016	17.	Boring or Jacking for 12-Inch Steel Cover Pipe, Unclassified Excavation, Complete	140	L.F.	\$ _____	\$ _____
15097	18.	Core into Existing Manhole and Rebuild Invert, Complete	1	Each	\$ _____	\$ _____
15100	19.	Extra for Outside Drop into Manhole, All Depths, Complete	1	Each	\$ _____	\$ _____
Incidental	20.	10-inch by 6-inch PVC Wye/Tee, with 18 L.F. of 6-inch Lateral PVC Pipe and Cap, Furnish and Install, Complete	2	Each	\$ _____	\$ _____
Incidental	21.	Extra Depth Manhole, 4-Foot Diameter Range, 6.01' to 15.00', Complete	58	V.F.	\$ _____	\$ _____
Incidental	22.	Cut, Cap, and Block All Sizes of Existing Gravity Lines, Complete	6	Each	\$ _____	\$ _____
Incidental	23.	Crushed Rock on Trench Surface, In Place, Complete (_____ L.F. x 255 Lbs/2000 = _____ Tons)	80	Ton	\$ _____	\$ _____
Incidental	24.	Extra for Crushed Rock for Trench Stabilization, Only On Order of the Engineer	50	Ton	\$ _____	\$ _____
Incidental	25.	Locate, Cut, and Tie-in to Existing Sewer Cleanout, Complete with Fittings as Needed	2	Each	\$ _____	\$ _____
Incidental	26.	Cut, Cap, and Block All Sizes of Existing Gravity or Service Lines, Complete	4	Each	\$ _____	\$ _____
Incidental	27.	Extra Depth Manhole, 4-Foot Diameter, 6.00' to 20.00' Depth, Complete	13	V.F.	\$ _____	\$ _____
TOTAL CONTRACT 502-13-01						\$ _____

J:\LAWRENCE\502-13-01 KY 32 RELOCATION\SUBMITTALS\DWG\11/21/2015 10:15:30 AM.dwg

DESIGNER	SRD	DATE	BY	REVISION
DRAWN	DRH	10/13	KGG	REVISION PER KTC COMMENTS
CHECKED	KGG	10/23	SRD	REVISION PER KTC COMMENTS BID CODES
APPROVED	RER			



ALL RIGHTS RESERVED
 THIS DOCUMENT IS THE PROPERTY OF BELL ENGINEERING AND SHALL NOT BE REPRODUCED IN WHOLE OR IN PART OR USED FOR CONSTRUCTION OF OTHER THAN THIS SPECIFIC PROJECT WITHOUT THE WRITTEN PERMISSION OF BELL ENGINEERING.
 FACSIMILES OF LICENSED PROFESSIONAL ENGINEER AND/OR LAND SURVEYOR SEALS, IF AFFIXED TO THIS DOCUMENT SHALL BE CONSIDERED LEGITIMATE ONLY IF SIGNED AND DATED BY THE REGISTRANT.



Lexington, KY (859) 278-5412
 Hopkinsville, KY (270) 886-5466

SEWER LINE UTILITY RELOCATION
 BLAINE-LOUISA (KY 32)
 LAWRENCE COUNTY FISCAL COURT
 LOUISA, KENTUCKY

SEWER
 SUMMARY OF WORK

DIVISION	ALL
CONTRACT NO.	502-13-01
DATE	APRIL 2013
SHEET NO.	U2 OF U12

PROPOSAL BID ITEMS

REVISED ADDENDUM #2: 11-18-15

151279

Page 1 of 6

Report Date 11/18/15

Section: 0001 - PAVING

LINE	BID CODE	ALT	DESCRIPTION	QUANTITY	UNIT	UNIT PRIC	FP	AMOUNT
0010	00003		CRUSHED STONE BASE	14,184.00	TON		\$	
0020	00020		TRAFFIC BOUND BASE	32.00	TON		\$	
0030	00100		ASPHALT SEAL AGGREGATE	56.00	TON		\$	
0040	00103		ASPHALT SEAL COAT	6.80	TON		\$	
0050	00190		LEVELING & WEDGING PG64-22	944.00	TON		\$	
0060	00212		CL2 ASPH BASE 1.00D PG64-22	12,020.00	TON		\$	
0070	00214		CL3 ASPH BASE 1.00D PG64-22	1,541.00	TON		\$	
0080	00301		CL2 ASPH SURF 0.38D PG64-22	3,151.00	TON		\$	
0090	00388		CL3 ASPH SURF 0.38B PG64-22	555.00	TON		\$	

Section: 0002 - ROADWAY

LINE	BID CODE	ALT	DESCRIPTION	QUANTITY	UNIT	UNIT PRIC	FP	AMOUNT
0100	00078		CRUSHED AGGREGATE SIZE NO 2	18.00	TON		\$	
0110	01000		PERFORATED PIPE-4 IN	3,062.00	LF		\$	
0120	01005		PERFORATED PIPE EDGE DRAIN-4 IN	3,042.00	LF		\$	
0130	01010		NON-PERFORATED PIPE-4 IN	986.00	LF		\$	
0140	01015		INSPECT & CERTIFY EDGE DRAIN SYSTEM	1.00	LS		\$	
0150	01020		PERF PIPE HEADWALL TY 1-4 IN	13.00	EACH		\$	
0160	01028		PERF PIPE HEADWALL TY 3-4 IN	4.00	EACH		\$	
0170	01740		CORED HOLE DRAINAGE BOX CON-4 IN	16.00	EACH		\$	
0180	01810		STANDARD CURB AND GUTTER	3,897.00	LF		\$	
0190	01986		DELINEATOR FOR BARRIER WALL-B/Y	24.00	EACH		\$	
0200	01987		DELINEATOR FOR GUARDRAIL BI DIRECTIONAL WHITE	55.00	EACH		\$	
0210	01992		INSTALL TEMP CONC MED BARR	1,700.00	LF		\$	
0220	02014		BARRICADE-TYPE III	10.00	EACH		\$	
0230	02091		REMOVE PAVEMENT	1,094.00	SQYD		\$	
0240	02159		TEMP DITCH	2,289.00	LF		\$	
0250	02160		CLEAN TEMP DITCH	1,145.00	LF		\$	
0260	02230		EMBANKMENT IN PLACE	279,920.00	CUYD		\$	
0270	02242		WATER (FOR DUST CONTROL)	173.00	MGAL		\$	
0280	02262		FENCE-WOVEN WIRE TYPE 1	365.00	LF		\$	
0290	02351		GUARDRAIL-STEEL W BEAM-S FACE	4,762.50	LF		\$	
0300	02360		GUARDRAIL TERMINAL SECTION NO 1	6.00	EACH		\$	
0310	02367		GUARDRAIL END TREATMENT TYPE 1	1.00	EACH		\$	
0320	02381		REMOVE GUARDRAIL	1,086.00	LF		\$	
0330	02391		GUARDRAIL END TREATMENT TYPE 4A	4.00	EACH		\$	
0340	02429		RIGHT-OF-WAY MONUMENT TYPE 1	41.00	EACH		\$	
0350	02432		WITNESS POST	46.00	EACH		\$	
0360	02482		CHANNEL LINING CLASS IA	953.00	TON		\$	
0370	02488		CHANNEL LINING CLASS IV	1,114.00	CUYD		\$	
0380	02545		CLEARING AND GRUBBING (APPROXIMATELY 47 ACRES)	1.00	LS		\$	
0390	02562		TEMPORARY SIGNS	733.00	SQFT		\$	
0400	02585		EDGE KEY	465.00	LF		\$	

PROPOSAL BID ITEMS

REVISED ADDENDUM #2: 11-18-15

151279

Page 2 of 6

Report Date 11/18/15

LINE	BID CODE	ALT	DESCRIPTION	QUANTITY	UNIT	UNIT PRIC	FP	AMOUNT
0410	02599		FABRIC-GEOTEXTILE TYPE IV	45,836.00	SQYD		\$	
0420	02600		FABRIC GEOTEXTILE TY IV FOR PIPE	6,590.00	SQYD	\$2.00	\$	\$13,180.00
0430	02650		MAINTAIN & CONTROL TRAFFIC	1.00	LS		\$	
0440	02653		LANE CLOSURE	2.00	EACH		\$	
0450	02671		PORTABLE CHANGEABLE MESSAGE SIGN	8.00	EACH		\$	
0460	02676		MOBILIZATION FOR MILL & TEXT	1.00	LS		\$	
0470	02677		ASPHALT PAVE MILLING & TEXTURING	470.00	TON		\$	
0480	02690		SAFELoading	5.60	CUYD		\$	
0490	02696		SHOULDER RUMBLE STRIPS-SAWED	1,500.00	LF		\$	
0500	02701		TEMP SILT FENCE	2,289.00	LF		\$	
0510	02703		SILT TRAP TYPE A	47.00	EACH		\$	
0520	02704		SILT TRAP TYPE B	47.00	EACH		\$	
0530	02705		SILT TRAP TYPE C	47.00	EACH		\$	
0540	02706		CLEAN SILT TRAP TYPE A	47.00	EACH		\$	
0550	02707		CLEAN SILT TRAP TYPE B	47.00	EACH		\$	
0560	02708		CLEAN SILT TRAP TYPE C	47.00	EACH		\$	
0570	02720		SIDEWALK-4 IN CONCRETE	2,062.00	SQYD		\$	
0580	02726		STAKING	1.00	LS		\$	
0590	02775		ARROW PANEL	2.00	EACH		\$	
0600	03148		CONC MEDIAN BARRIER TYPE 9E	700.00	LF		\$	
0610	04950		REMOVE SIGNAL EQUIPMENT	1.00	EACH		\$	
0620	05950		EROSION CONTROL BLANKET	35,584.00	SQYD		\$	
0630	05952		TEMP MULCH	151,653.00	SQYD		\$	
0640	05953		TEMP SEEDING AND PROTECTION	113,740.00	SQYD		\$	
0650	05963		INITIAL FERTILIZER	2.00	TON		\$	
0660	05964		20-10-10 FERTILIZER	11.40	TON		\$	
0670	05985		SEEDING AND PROTECTION	180,858.00	SQYD		\$	
0680	05990		SODDING	4,998.00	SQYD		\$	
0690	05992		AGRICULTURAL LIMESTONE	112.00	TON		\$	
0700	06401		FLEXIBLE DELINEATOR POST-M/W	40.00	EACH		\$	
0710	06510		PAVE STRIPING-TEMP PAINT-4 IN	39,642.00	LF		\$	
0720	06514		PAVE STRIPING-PERM PAINT-4 IN	45,212.00	LF		\$	
0730	06568		PAVE MARKING-THERMO STOP BAR-24IN	223.00	LF		\$	
0740	06574		PAVE MARKING-THERMO CURV ARROW	27.00	EACH		\$	
0750	06575		PAVE MARKING-THERMO COMB ARROW	1.00	EACH		\$	
0760	06589		PAVEMENT MARKER TYPE V-MW	13.00	EACH		\$	
0770	06591		PAVEMENT MARKER TYPE V-BY	194.00	EACH		\$	
0780	08100		CONCRETE-CLASS A	6.76	CUYD		\$	
0790	08150		STEEL REINFORCEMENT	326.00	LB		\$	
0800	08902		CRASH CUSHION TY VI CLASS B TL3	2.00	EACH		\$	
0810	08903		CRASH CUSHION TY VI CLASS BT TL3	2.00	EACH		\$	
0820	10020NS		FUEL ADJUSTMENT	125,277.00	DOLL	\$1.00	\$	\$125,277.00
0830	10030NS		ASPHALT ADJUSTMENT	71,440.00	DOLL	\$1.00	\$	\$71,440.00
0840	20430ED		SAW CUT	2,961.00	LF		\$	
0850	22680EN		QWICK CURB MEDIAN SEPARATOR (REVISED: 11-18-15)	500.00	LF		\$	
0860	23139EN		STRIPING REMOVAL	3,700.00	LF		\$	
0870	23158ES505		DETECTABLE WARNINGS	158.00	SQFT		\$	
0880	23274EN11F		TURF REINFORCEMENT MAT 1	1,858.00	SQYD		\$	
0890	23276EN11F		TURF REINFORCEMENT MAT 3	1,403.00	SQYD		\$	
0900	24540		R/W MONUMENT TYPE 3	5.00	EACH		\$	

PROPOSAL BID ITEMS

REVISED ADDENDUM #2: 11-18-15

151279

Page 3 of 6

Report Date 11/18/15

Section: 0003 - DRAINAGE

LINE	BID CODE	ALT	DESCRIPTION	QUANTITY	UNIT	UNIT PRIC	FP	AMOUNT
0910	00440		ENTRANCE PIPE-15 IN	72.00	LF		\$	
0920	00441		ENTRANCE PIPE-18 IN	173.00	LF		\$	
0930	00462		CULVERT PIPE-18 IN	110.00	LF		\$	
0940	00464		CULVERT PIPE-24 IN	68.00	LF		\$	
0950	00466		CULVERT PIPE-30 IN	305.00	LF		\$	
0960	00468		CULVERT PIPE-36 IN	108.00	LF		\$	
0970	00469		CULVERT PIPE-42 IN	290.00	LF		\$	
0980	00470		CULVERT PIPE-48 IN	184.00	LF		\$	
0990	00475		CULVERT PIPE-78 IN	245.00	LF		\$	
1000	00521		STORM SEWER PIPE-15 IN	986.00	LF		\$	
1010	00522		STORM SEWER PIPE-18 IN	145.00	LF		\$	
1020	01204		PIPE CULVERT HEADWALL-18 IN	2.00	EACH		\$	
1030	01210		PIPE CULVERT HEADWALL-30 IN	3.00	EACH		\$	
1040	01214		PIPE CULVERT HEADWALL-42 IN	2.00	EACH		\$	
1050	01216		PIPE CULVERT HEADWALL-48 IN	2.00	EACH		\$	
1060	01396		METAL END SECTION TY 3-42 IN	4.00	EACH		\$	
1070	01432		SLOPED BOX OUTLET TYPE 1-15 IN	3.00	EACH		\$	
1080	01450		S & F BOX INLET-OUTLET-18 IN	2.00	EACH		\$	
1090	01451		S & F BOX INLET-OUTLET-24 IN	2.00	EACH		\$	
1100	01452		S & F BOX INLET-OUTLET-30 IN	1.00	EACH		\$	
1110	01456		CURB BOX INLET TYPE A	11.00	EACH		\$	
1120	24575ES610		HEADWALL (PIPE CULVERT)	2.00	EACH		\$	
1130	24814EC		PIPELINE INSPECTION	2,067.00	LF		\$	

Section: 0004 - BRIDGE - KY 2565 - DRAWING # 27173

LINE	BID CODE	ALT	DESCRIPTION	QUANTITY	UNIT	UNIT PRIC	FP	AMOUNT
1140	02223		GRANULAR EMBANKMENT	50.80	CUYD		\$	
1150	02625		REMOVE HEADWALL	1.00	EACH		\$	
1160	08003		FOUNDATION PREPARATION	1.00	LS		\$	
1170	08100		CONCRETE-CLASS A	47.50	CUYD		\$	
1180	08150		STEEL REINFORCEMENT	5,841.00	LB		\$	

Section: 0005 - SEWER

LINE	BID CODE	ALT	DESCRIPTION	QUANTITY	UNIT	UNIT PRIC	FP	AMOUNT
1190	15016		S ENCASMENT STEEL BORED RANGE 3	140.00	LF		\$	
1200	15017		S ENCASMENT STEEL BORED RANGE 4	125.00	LF		\$	
1210	15022		S ENCASMENT STEEL OPEN CUT RANGE 3 (12-IN X 0.218-IN COVER PIPE, SPACERS & END SEALS)	140.00	LF		\$	
1220	15023		S ENCASMENT STEEL OPEN CUT RANGE 4 (16-IN X 0.281-IN COVER PIPE, SPACERS & END SEALS)	485.00	LF		\$	

PROPOSAL BID ITEMS

REVISED ADDENDUM #2: 11-18-15

151279

Page 4 of 6

Report Date 11/18/15

LINE	BID CODE	ALT	DESCRIPTION	QUANTITY	UNIT	UNIT PRIC	FP	AMOUNT
1230	15090		S LATERAL SHORT SIDE 06 INCH (SDR 35 PVC) (230 TOTAL LF) (REVISED:11-18-15)	1.00	EACH		\$	
1240	15092		S MANHOLE (4-FT)	6.00	EACH		\$	
1250	15093		S MANHOLE ABANDON/REMOVE	7.00	EACH		\$	
1260	15094		S MANHOLE ADJUST TO GRADE	1.00	EACH		\$	
1270	15096		S MANHOLE CASTING WATERTIGHT (4-FT, 0.01' X 6.01')	7.00	EACH		\$	
1280	15096		S MANHOLE CASTING WATERTIGHT (4-FT OVER EXISTING 8-IN OR 10-IN LINE, 1.00' -6.00' DEPTH)	5.00	EACH		\$	
1290	15097		S MANHOLE RECONSTRUCT INVERT	1.00	EACH		\$	
1300	15099		S MANHOLE TAP EXISTING	5.00	EACH		\$	
1310	15100		S MANHOLE TAP EXISTING ADD DROP	2.00	EACH		\$	
1320	15101		S MANHOLE WITH DROP	2.00	EACH		\$	
1330	15112		S PIPE PVC 08 INCH (SDR 35)	435.00	LF		\$	
1340	15113		S PIPE PVC 10 INCH (SDR 35)	2,400.00	LF		\$	

Section: 0006 - SIGNALIZATION

LINE	BID CODE	ALT	DESCRIPTION	QUANTITY	UNIT	UNIT PRIC	FP	AMOUNT
1350	04793		CONDUIT-1 1/4 IN	865.00	LF		\$	
1360	04795		CONDUIT-2 IN	80.00	LF		\$	
1370	04811		ELECTRICAL JUNCTION BOX TYPE B	9.00	EACH		\$	
1380	04820		TRENCHING AND BACKFILLING	945.00	LF		\$	
1390	04830		LOOP WIRE	2,110.00	LF		\$	
1400	04844		CABLE-NO. 14/5C	915.00	LF		\$	
1410	04850		CABLE-NO. 14/1 PAIR	3,085.00	LF		\$	
1420	04885		MESSENGER-10800 LB	390.00	LF		\$	
1430	04895		LOOP SAW SLOT AND FILL	770.00	LF		\$	
1440	04931		INSTALL CONTROLLER TYPE 170	1.00	EACH		\$	
1450	04932		INSTALL STEEL STRAIN POLE	4.00	EACH		\$	
1460	04950		REMOVE SIGNAL EQUIPMENT	1.00	EACH		\$	
1470	20094ES835		TEMP RELOCATION OF SIGNAL HEAD	20.00	EACH		\$	
1480	20188NS835		INSTALL LED SIGNAL-3 SECTION	10.00	EACH		\$	
1490	23157EN		TRAFFIC SIGNAL POLE BASE	21.00	CUYD		\$	
1500	23982EC		INSTALL ANTENNA	1.00	EACH		\$	

Section: 0007 - LIGHTING

LINE	BID CODE	ALT	DESCRIPTION	QUANTITY	UNIT	UNIT PRIC	FP	AMOUNT
1510	04700		POLE 30 FT MTG HT (BLACK) (REVISED: 11-17-15)	44.00	EACH		\$	
1520	04700		POLE 30 FT MTG HT	12.00	EACH		\$	
1530	04721		BRACKET 6 FT (REVISED: 11-17-15)	51.00	EACH		\$	

PROPOSAL BID ITEMS

REVISED ADDENDUM #2: 11-18-15

151279

Page 5 of 6

Report Date 11/18/15

LINE	BID CODE	ALT	DESCRIPTION	QUANTITY	UNIT	UNIT PRIC	FP	AMOUNT
1540	04724		BRACKET 12 FT	4.00	EACH		\$	
1550	04725		BRACKET 15 FT	1.00	EACH		\$	
1560	04740		POLE BASE (REVISED: 11-17-15)	50.00	EACH		\$	
1570	04750		TRANSFORMER BASE (BLACK) (REVISED: 11-17-15)	44.00	EACH		\$	
1580	04750		TRANSFORMER BASE	12.00	EACH		\$	
1590	04761		LIGHTING CONTROL EQUIPMENT	3.00	EACH		\$	
1600	04770		HPS LUMINAIRE (BLACK) (REVISED: 11-17-15)	44.00	EACH		\$	
1610	04770		HPS LUMINAIRE	12.00	EACH		\$	
1620	04780		FUSED CONNECTOR KIT	76.00	EACH		\$	
1630	04795		CONDUIT-2 IN	11,054.00	LF		\$	
1640	04797		CONDUIT-3 IN	200.00	LF		\$	
1650	04820		TRENCHING AND BACKFILLING	10,644.00	LF		\$	
1660	04832		WIRE-NO. 12	6,249.00	LF		\$	
1670	04834		WIRE-NO. 6	34,915.00	LF		\$	
1680	20391NS835		ELECTRICAL JUNCTION BOX TYPE A	32.00	EACH		\$	
1690	21543EN		BORE AND JACK CONDUIT	270.00	LF		\$	

Section: 0008 - LANDSCAPING

LINE	BID CODE	ALT	DESCRIPTION	QUANTITY	UNIT	UNIT PRIC	FP	AMOUNT
1700	20000ES724		TREE (THUJA OCCIDENTALS 'TECHNY')	17.00	EACH		\$	
1710	20000ES724		TREE (DOWNY SERVICEBERRY)	3.00	EACH		\$	
1720	20001ES724		SHRUB (BRONX FORSYTHIA)	51.00	EACH		\$	
1730	20001ES724		SHRUB (VIBURNUM TRILOBUM 'COMPACTUM')	28.00	EACH		\$	
1740	20001ES724		SHRUB (GREEN GEM BOXWOOD)	20.00	EACH		\$	
1750	20001ES724		SHRUB (OLD GOLD JUNIPER)	10.00	EACH		\$	
1760	20001ES724		SHRUB (RHUS AROMATICA 'GRO-LOW')	10.00	EACH		\$	
1770	20001ES724		SHRUB (VIBERNUM PRUNIFOLIUM)	2.00	EACH		\$	
1780	23613EC		PERENNIALS (STELLA DORO DAYLILY)	18.00	EACH		\$	
1790	24558ED		ORNAMENTAL GRASS (VARIEGATED LILY TURF)	73.00	EACH		\$	
1800	24558ED		ORNAMENTAL GRASS (HAMELYN FOUNTIAN GRASS)	52.00	EACH		\$	
1810	24558ED		ORNAMENTAL GRASS (ELIJAH BLUE FESCUE GRASS)	44.00	EACH		\$	

Section: 0009 - DEMOBILIZATION &/OR MOBILIZATION

PROPOSAL BID ITEMS

REVISED ADDENDUM #2: 11-18-15

151279

Page 6 of 6

Report Date 11/18/15

LINE	BID CODE	ALT	DESCRIPTION	QUANTITY	UNIT	UNIT PRIC	FP	AMOUNT
1820	02568		MOBILIZATION	1.00	LS		\$	
1830	02569		DEMOBILIZATION	1.00	LS		\$	